

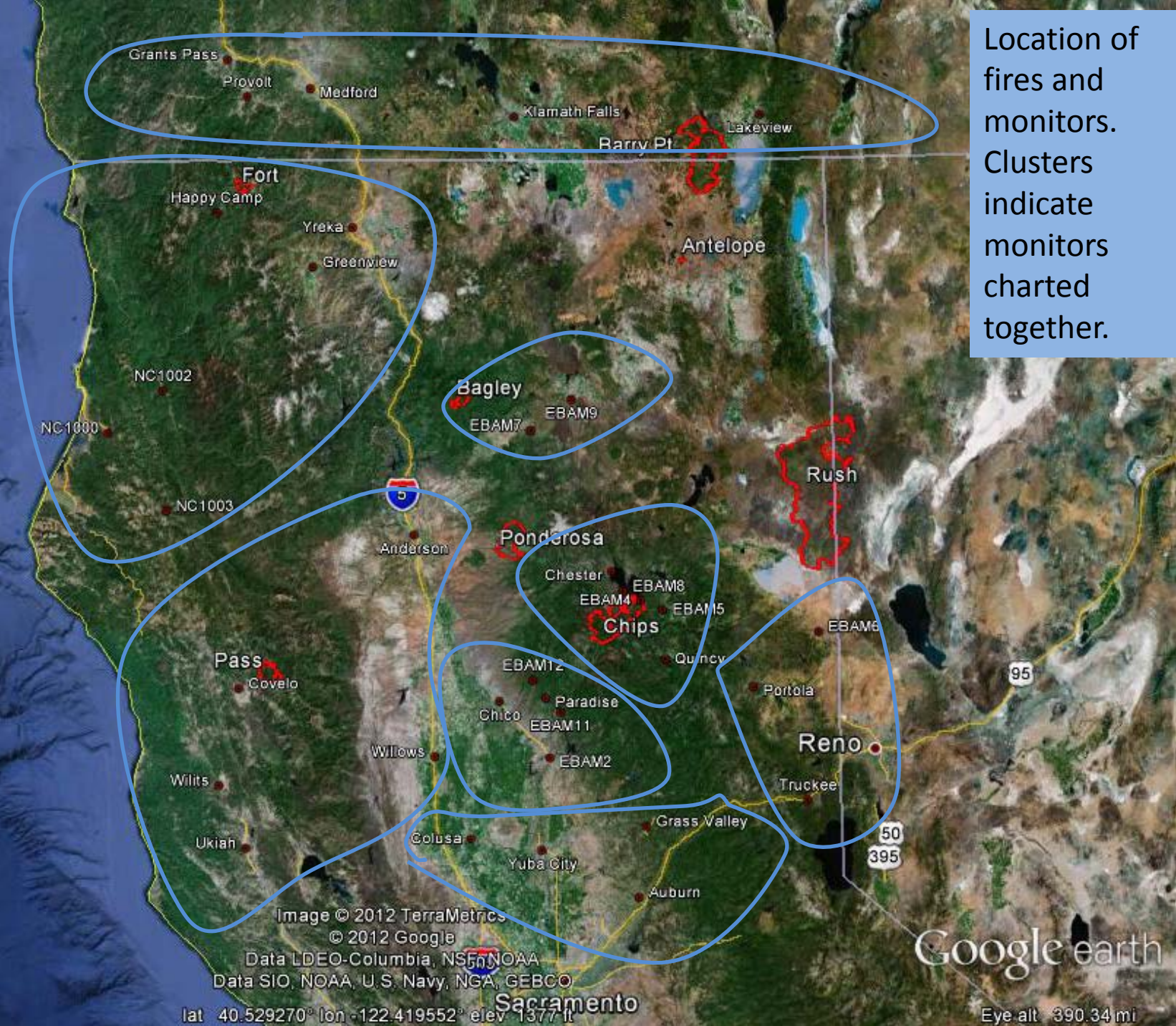
Smoke Modeling Predictions
and
Ambient Air Monitoring
Concentrations
for
August 23, 2012

Prepared by
Thomas Dzomba
USDA-FS Northern Region

- All monitoring data shown is preliminary and has not been quality assured. It is presented here for discussion purposes only.
- This document does not represent official USFS announcements, views, or policy.

- Slide 2 shows the air monitoring locations from which data was gathered. Clusters indicate monitors that are charted together later in the presentation.
- Slides 3 – 10 show forecasted surface PM_{2.5} concentrations for different times on August 22, 2012 from the BlueSky modeling framework. Lowest concentrations are depicted in green; highest concentrations are depicted in red and dark purple.
- Slides 11- 18 depict hourly monitoring values for air monitoring locations on August 22, 2012. The slides are roughly in order of monitoring locations from north to south.

Location of fires and monitors. Clusters indicate monitors charted together.



August 23, 2012
0450 PST

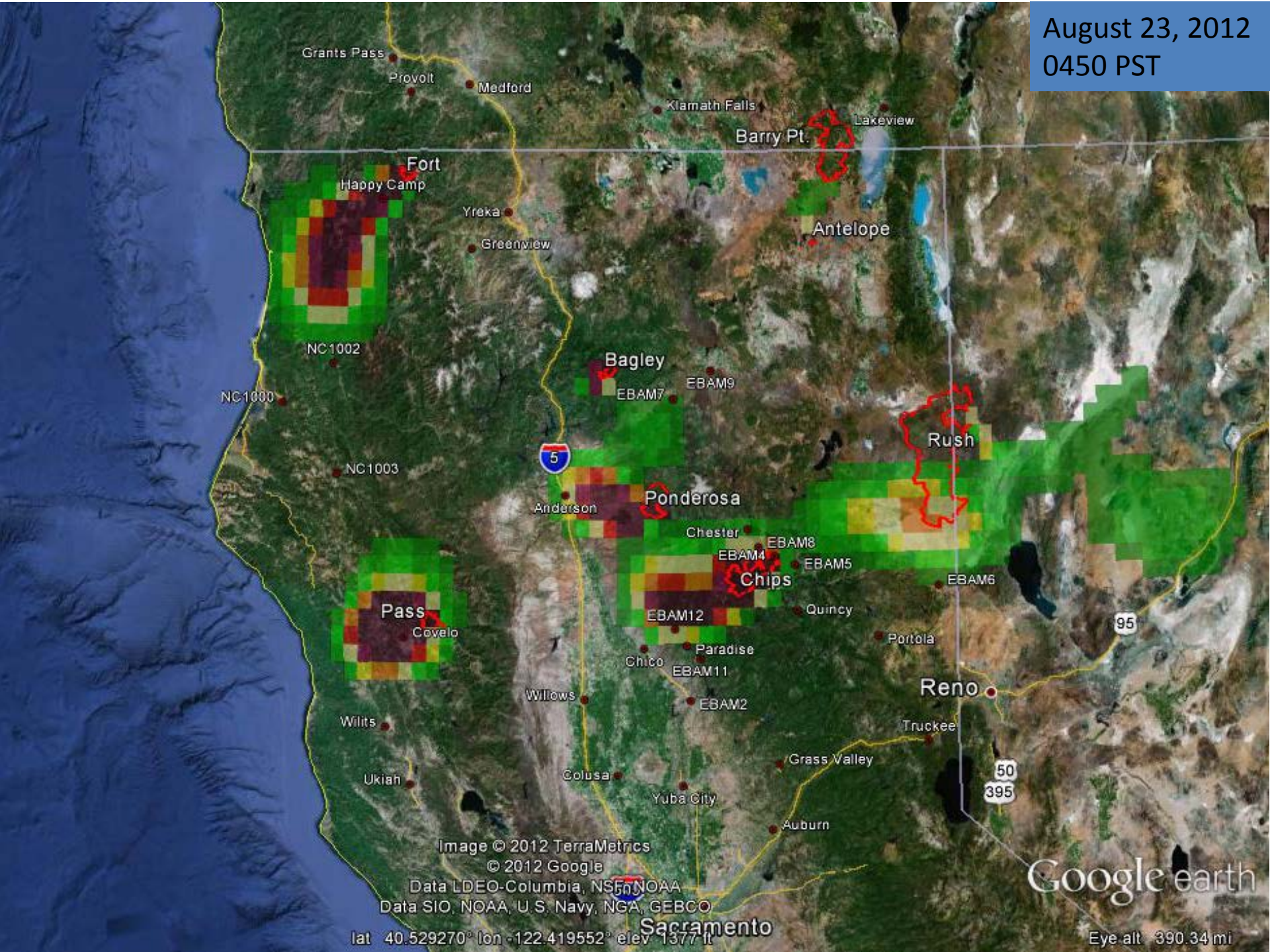


Image © 2012 TerraMetrics
© 2012 Google
Data LDEO-Columbia, NSF, NOAA
Data SIO, NOAA, U.S. Navy, NGA, GEBCO
lat 40.529270° lon -122.419552° elev 1377 ft

Google earth

Eye alt 390.34 mi

August 23, 2012
0758 PST

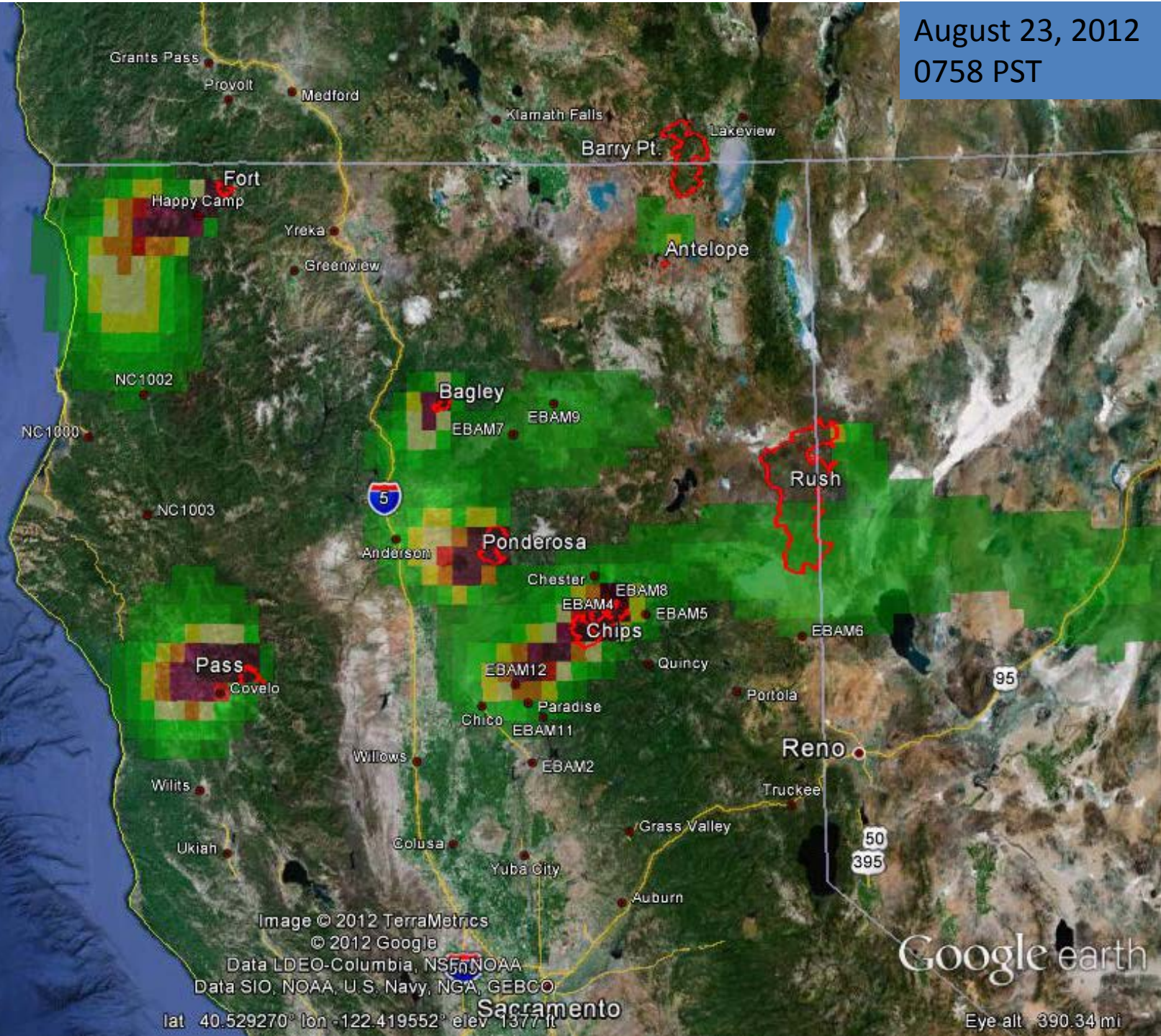
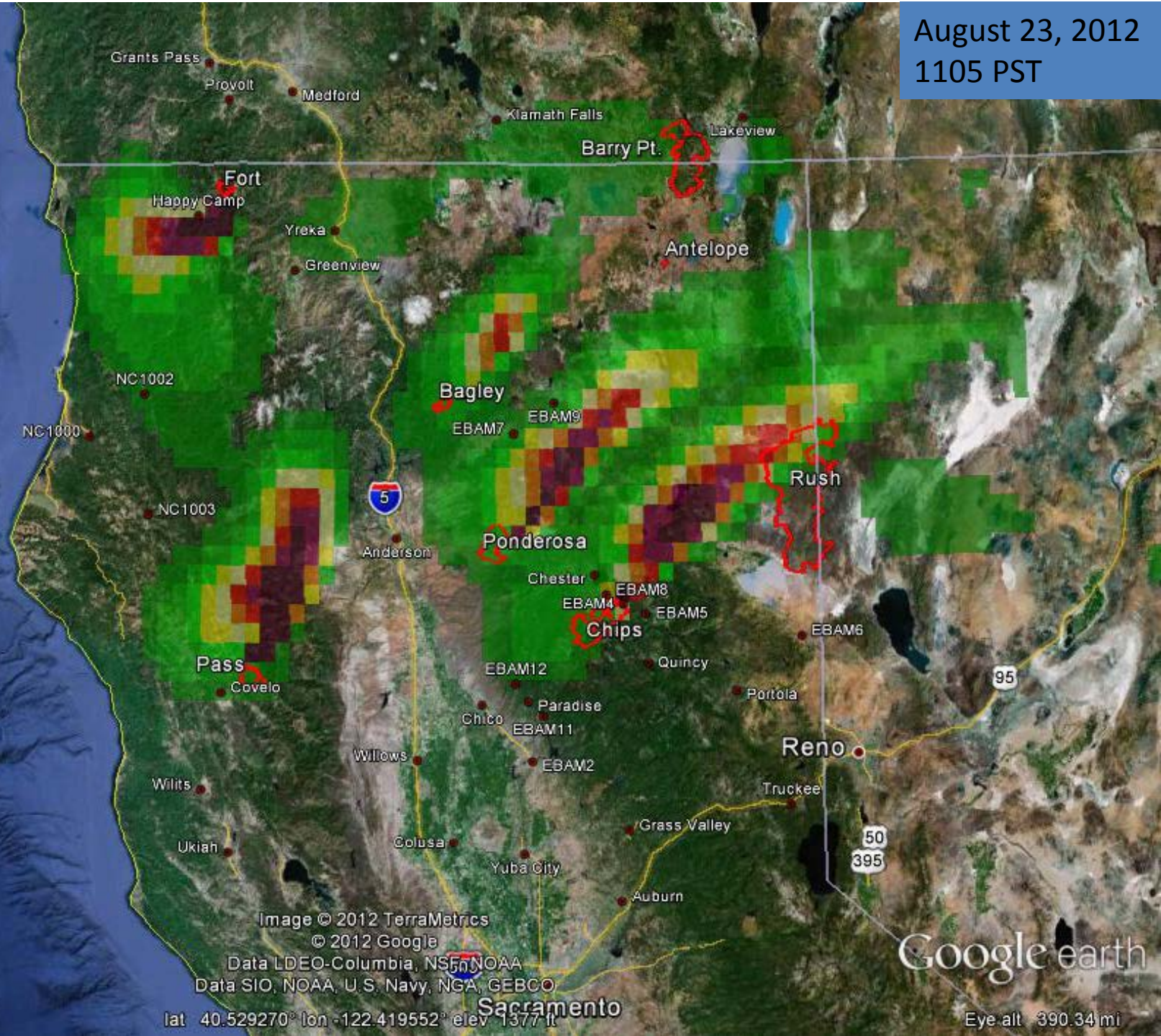


Image © 2012 TerraMetrics
© 2012 Google
Data LDEO-Columbia, NSF, NOAA
Data SIO, NOAA, U.S. Navy, NGA, GEBCO
lat 40.529270° lon -122.419552° elev 1377 ft

Google earth

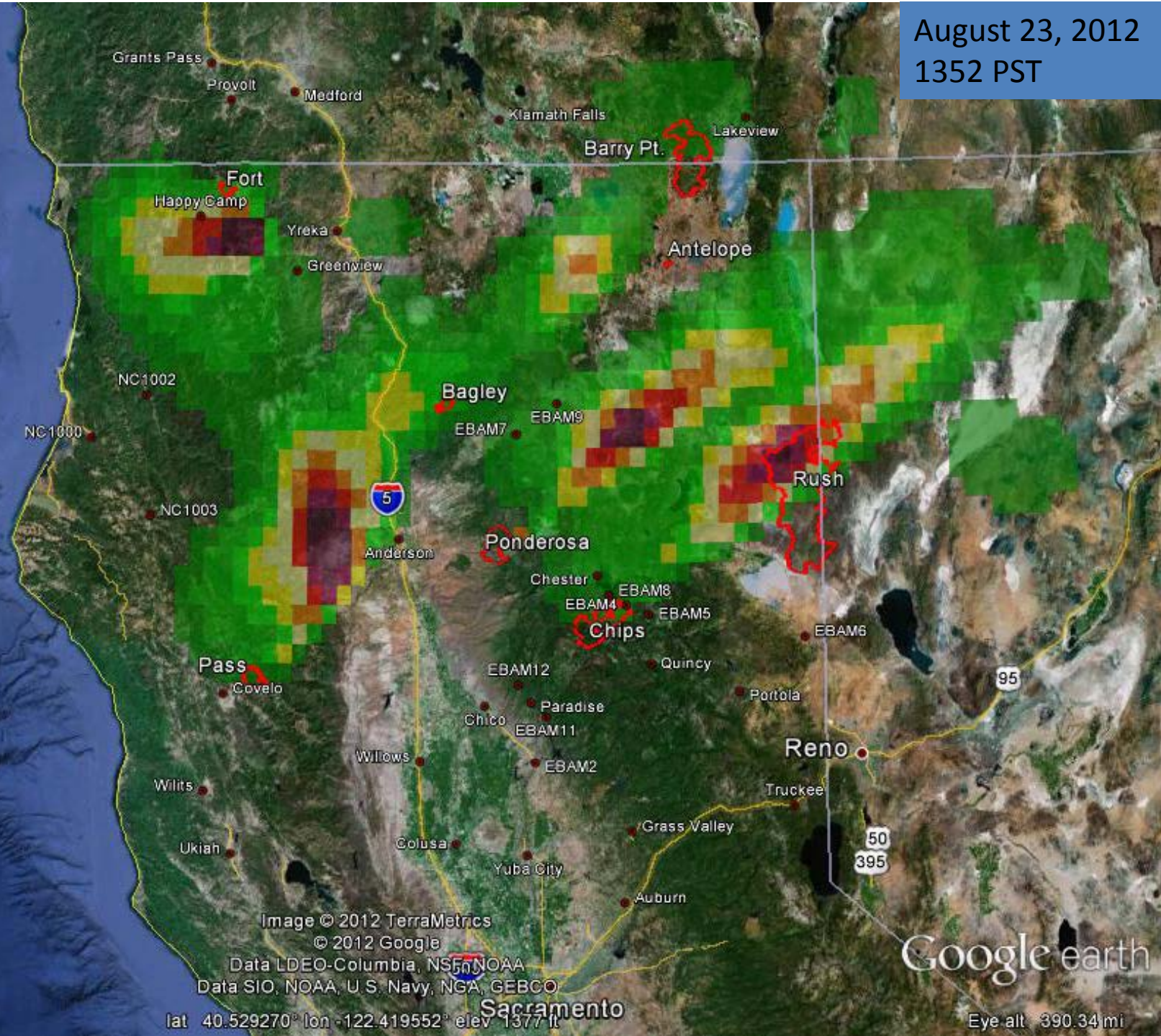
Eye alt 390.34 mi

August 23, 2012
1105 PST



Google earth

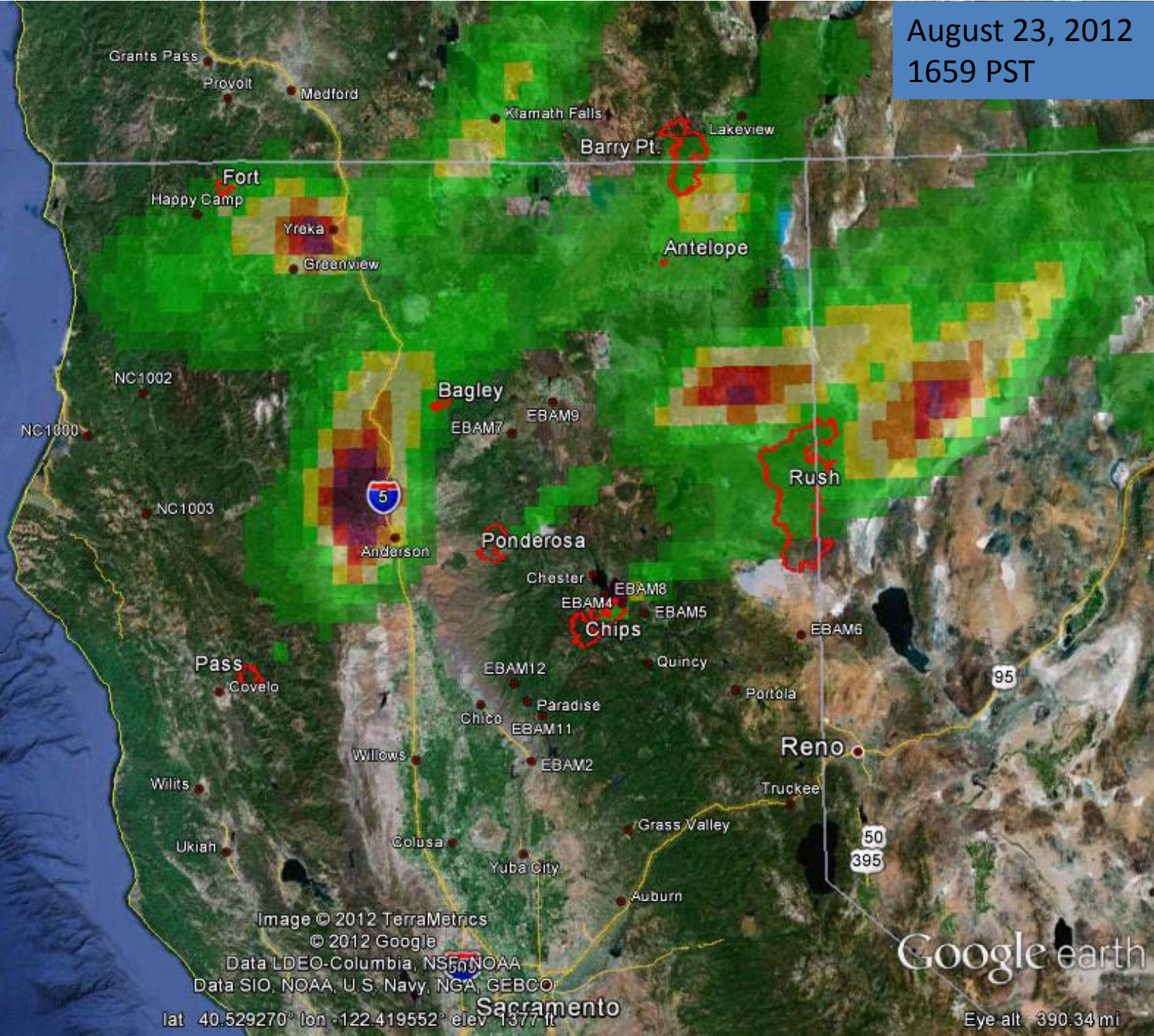
August 23, 2012
1352 PST



Google earth

Eye alt 390.34 mi

August 23, 2012
1659 PST



Google earth

Eye alt 390.34 mi

August 23, 2012
2006 PST

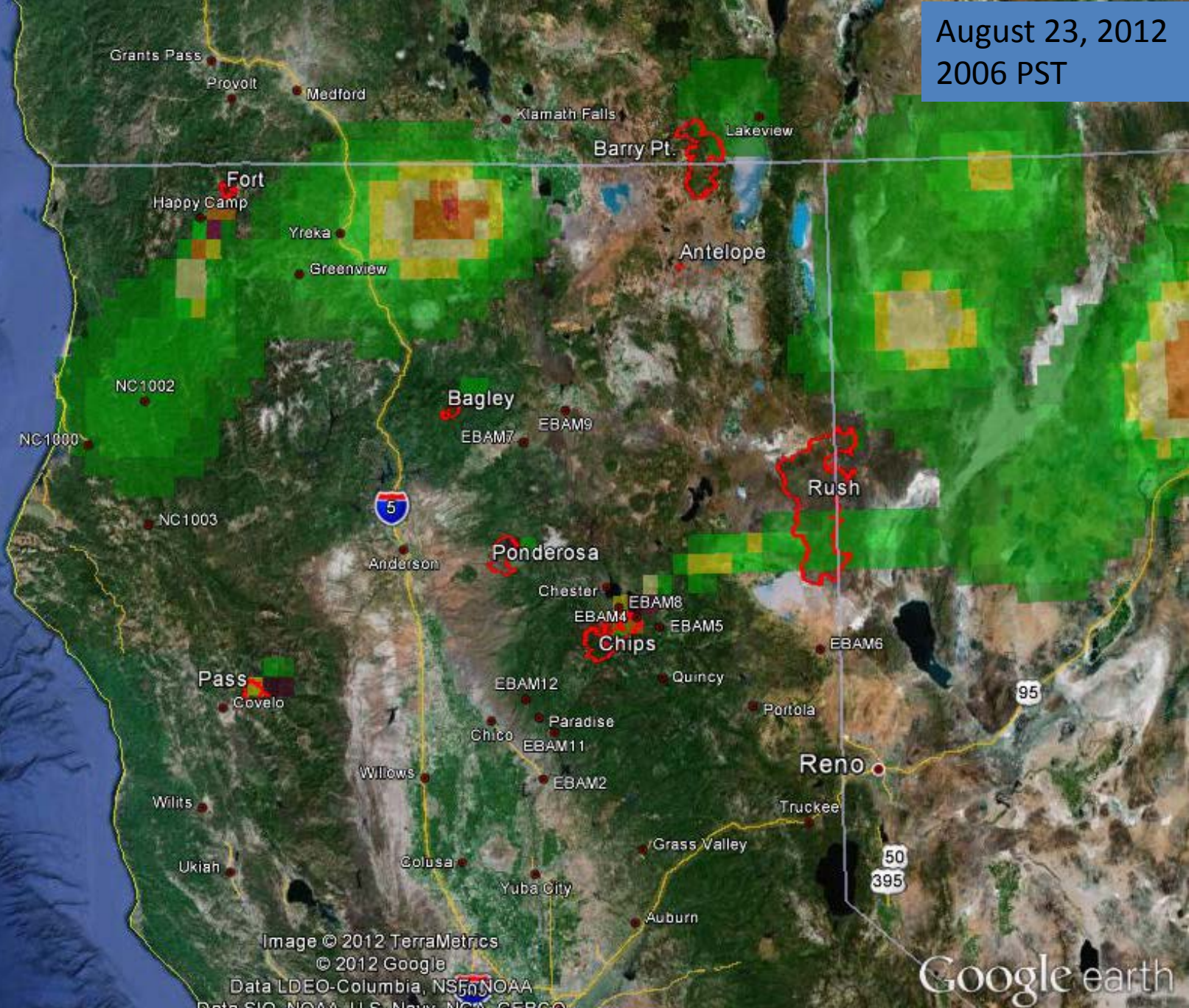


Image © 2012 TerraMetrics
© 2012 Google
Data LDEO-Columbia, NSF, NOAA
Data SIO, NOAA, U.S. Navy, NGA, GEBCO
lat 40.529270° lon -122.419552° elev 1377 ft

Google earth

Eye alt 390.34 mi

August 23, 2012
2253 PST

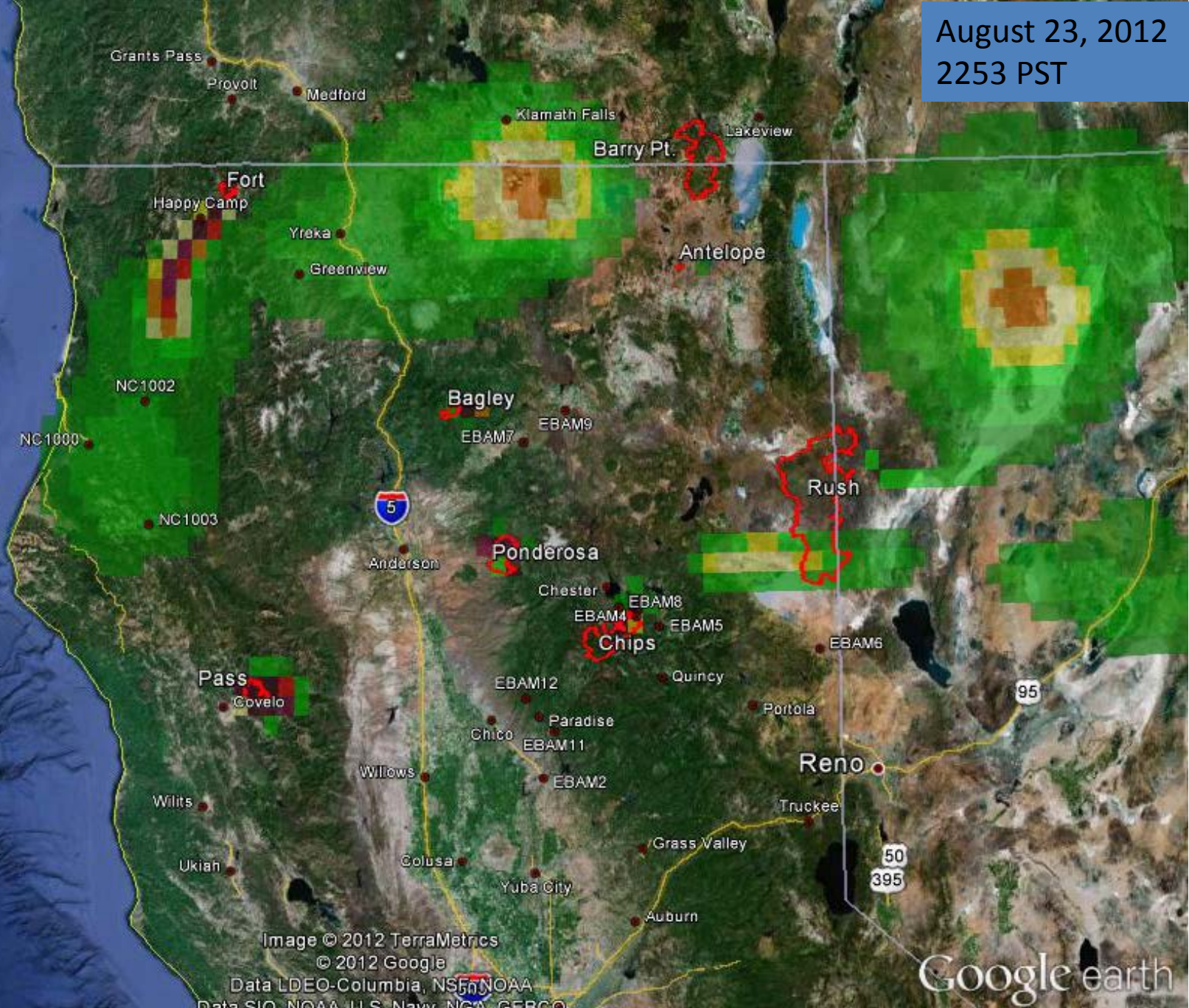
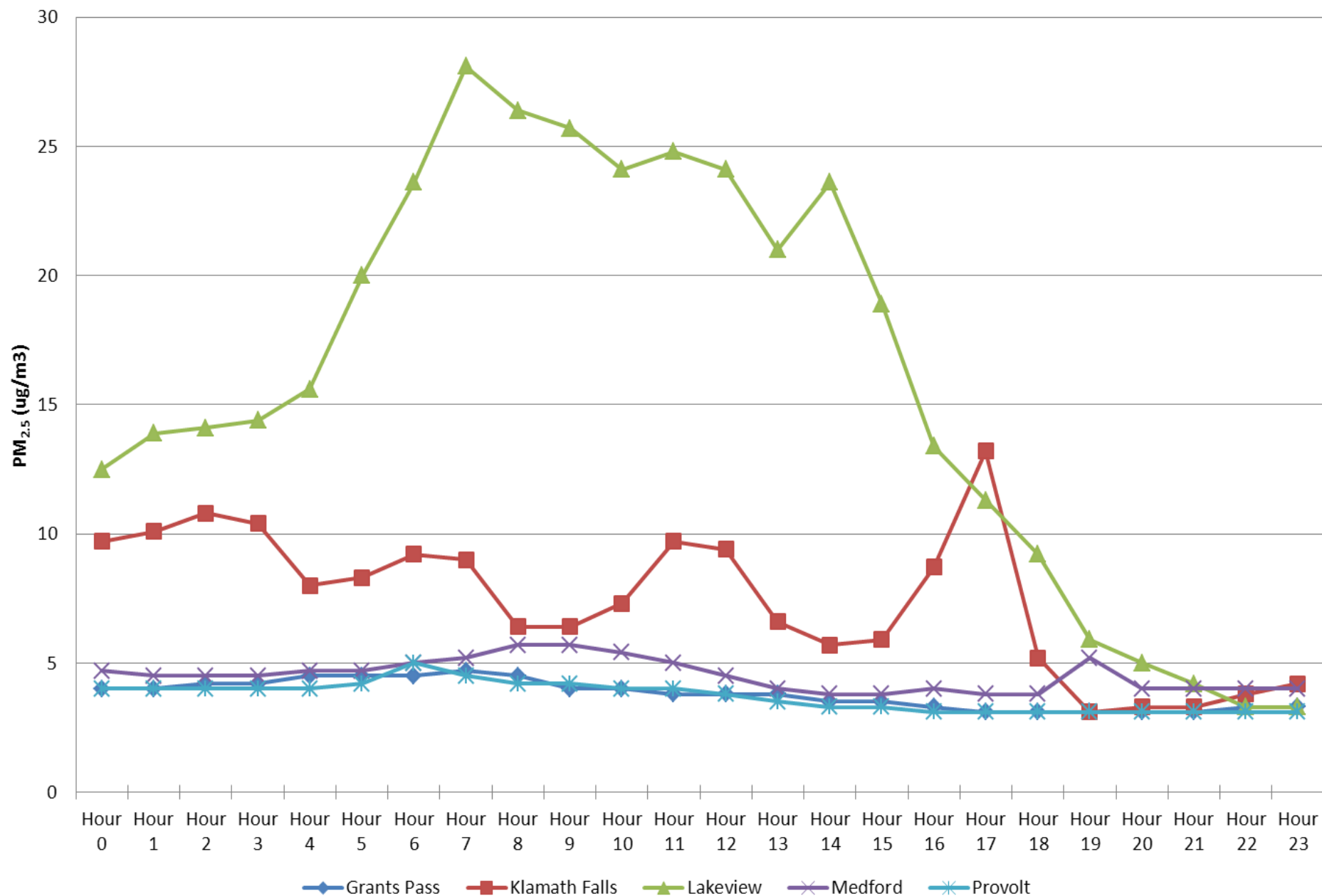


Image © 2012 TerraMetrics
© 2012 Google
Data LDEO-Columbia, NSF, NOAA
Data SIO, NOAA, U.S. Navy, NGA, GBCO
lat 40.529270° lon -122.419552° elev 1377 ft
Sacramento

Google earth
Eye alt 390.34 mi

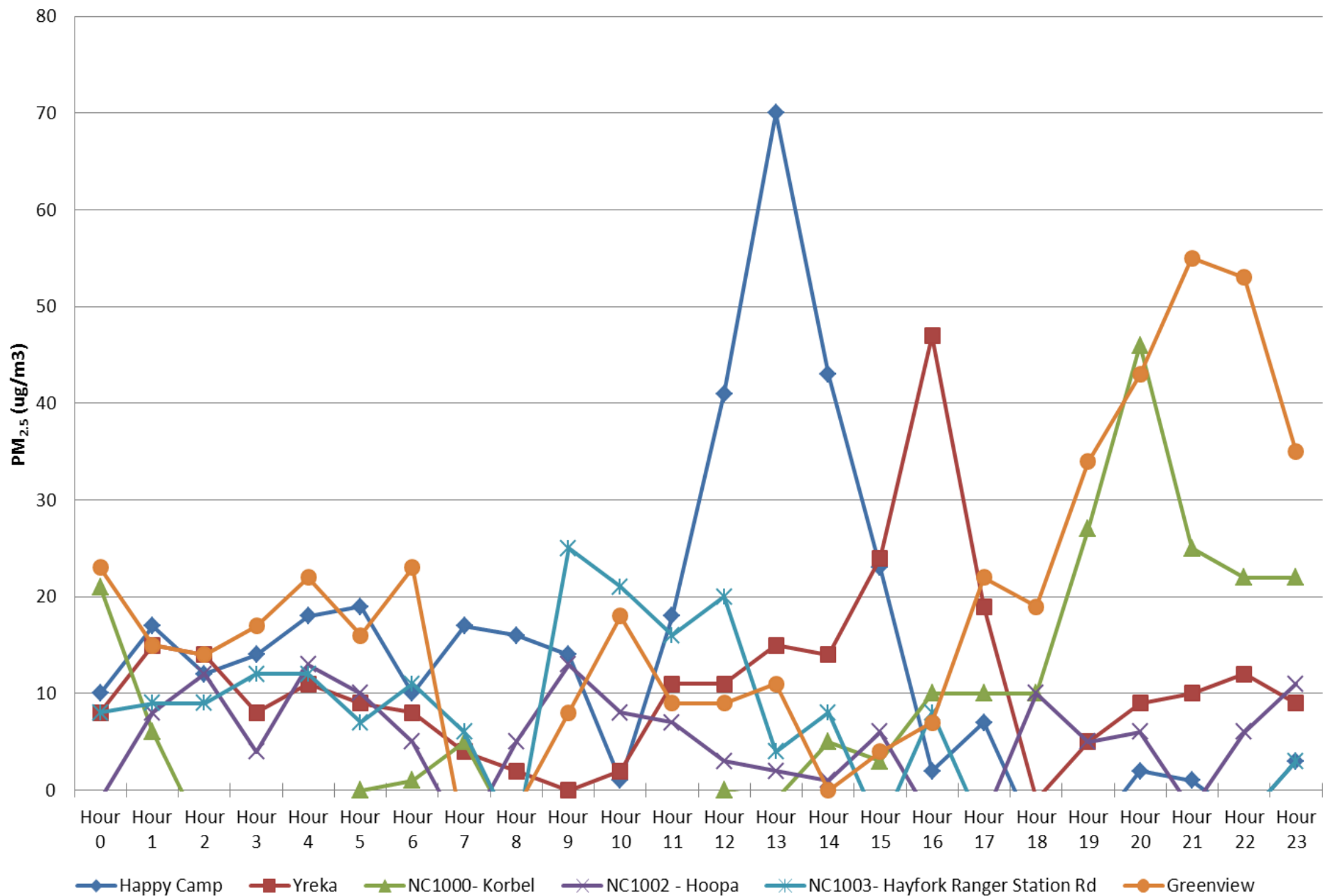
23-Aug-12 (All data in PST)

Data Preliminary and not Quality Assured



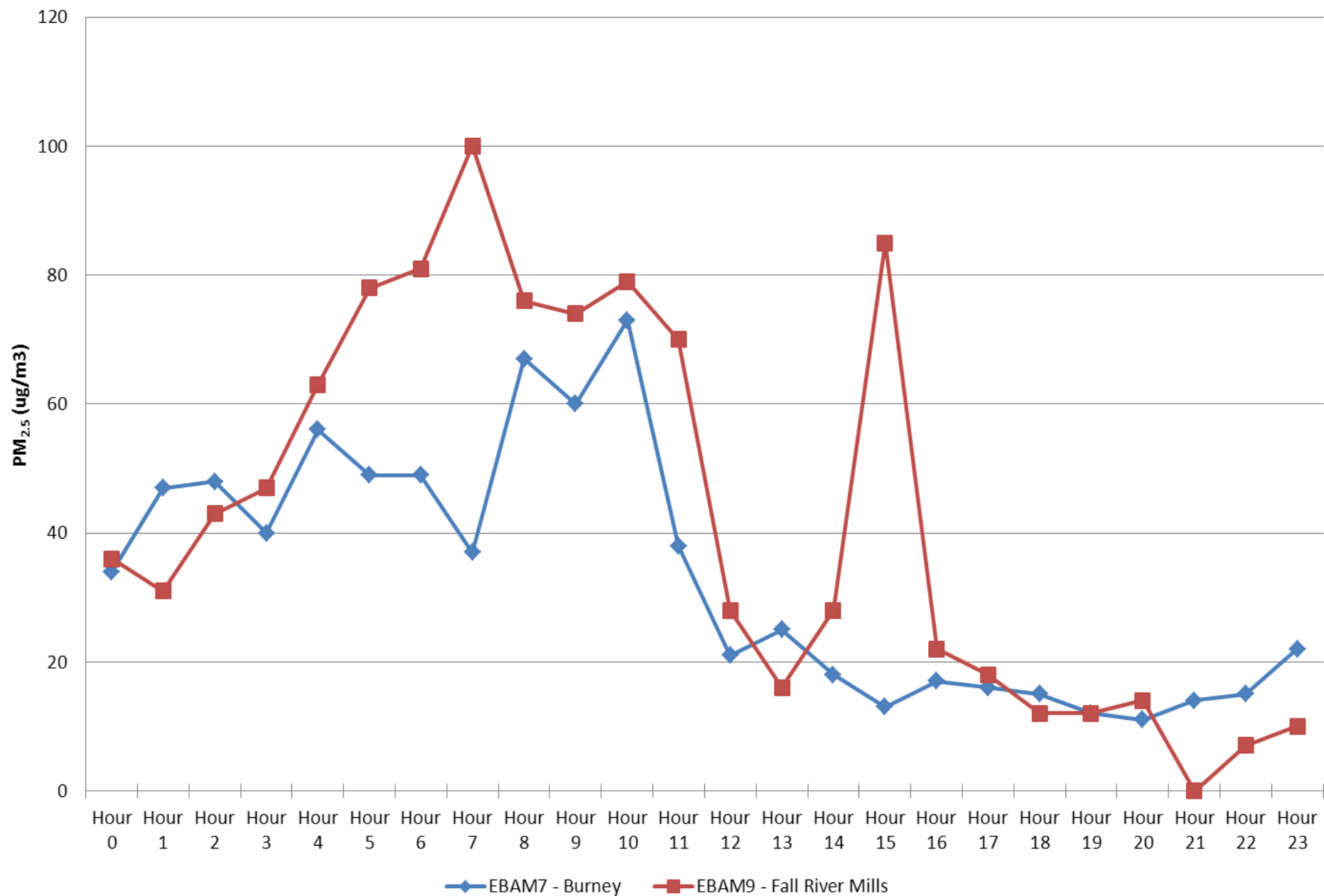
23-Aug-12 (All data in PST)

Data Preliminary and not Quality Assured



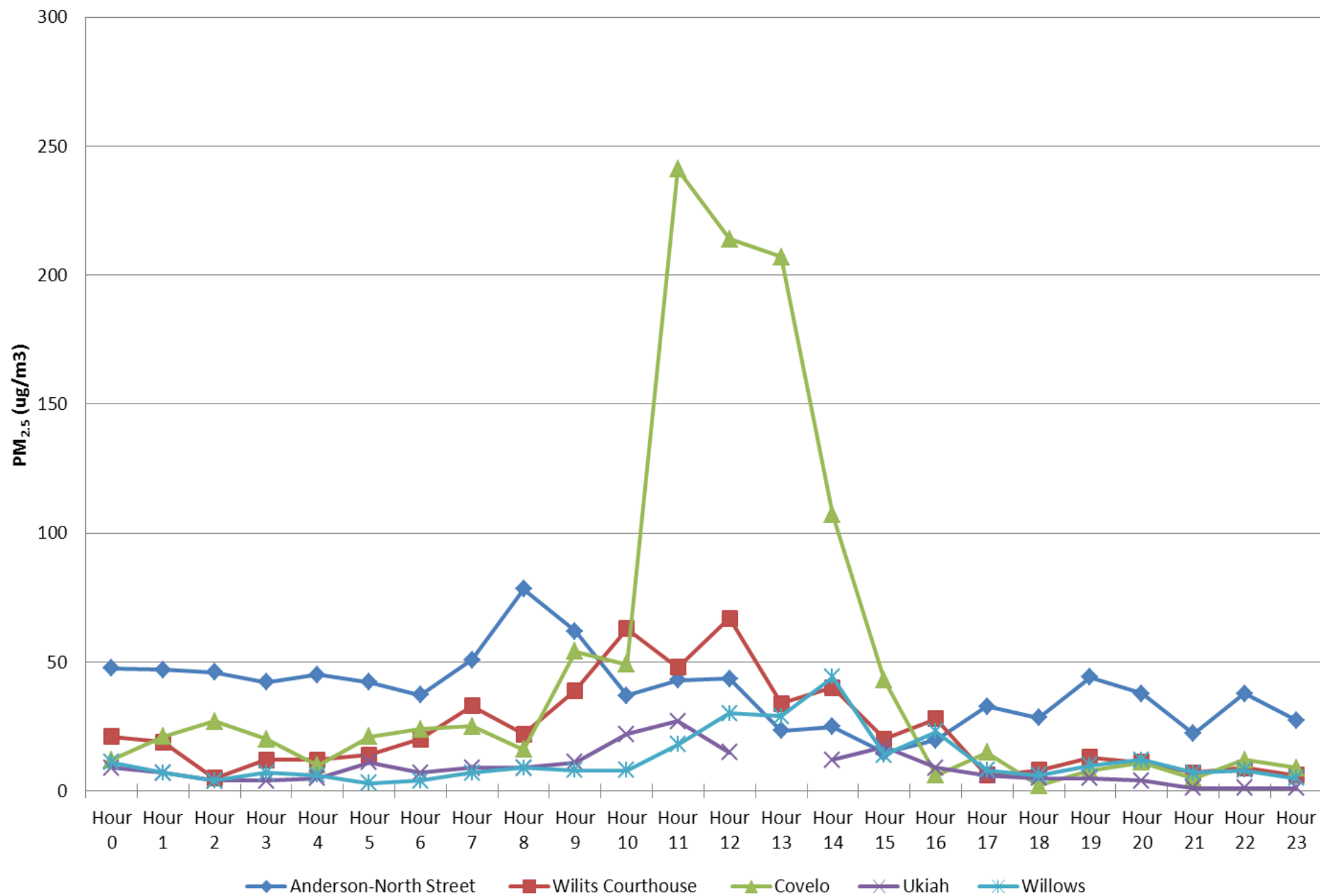
23-Aug-12 (All data in PST)

Data Preliminary and not Quality Assured



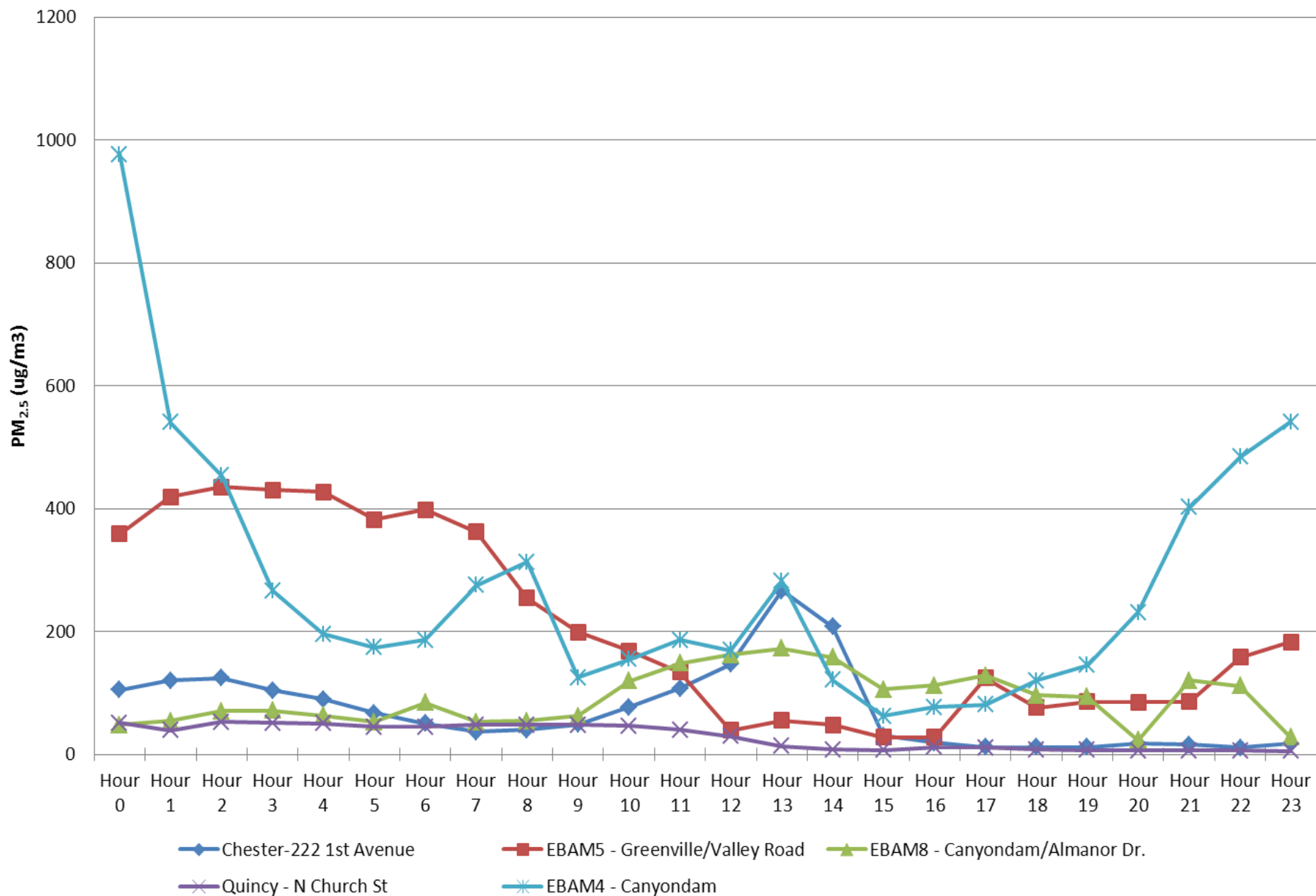
23-Aug-12 (All data in PST)

Data Preliminary and not Quality Assured



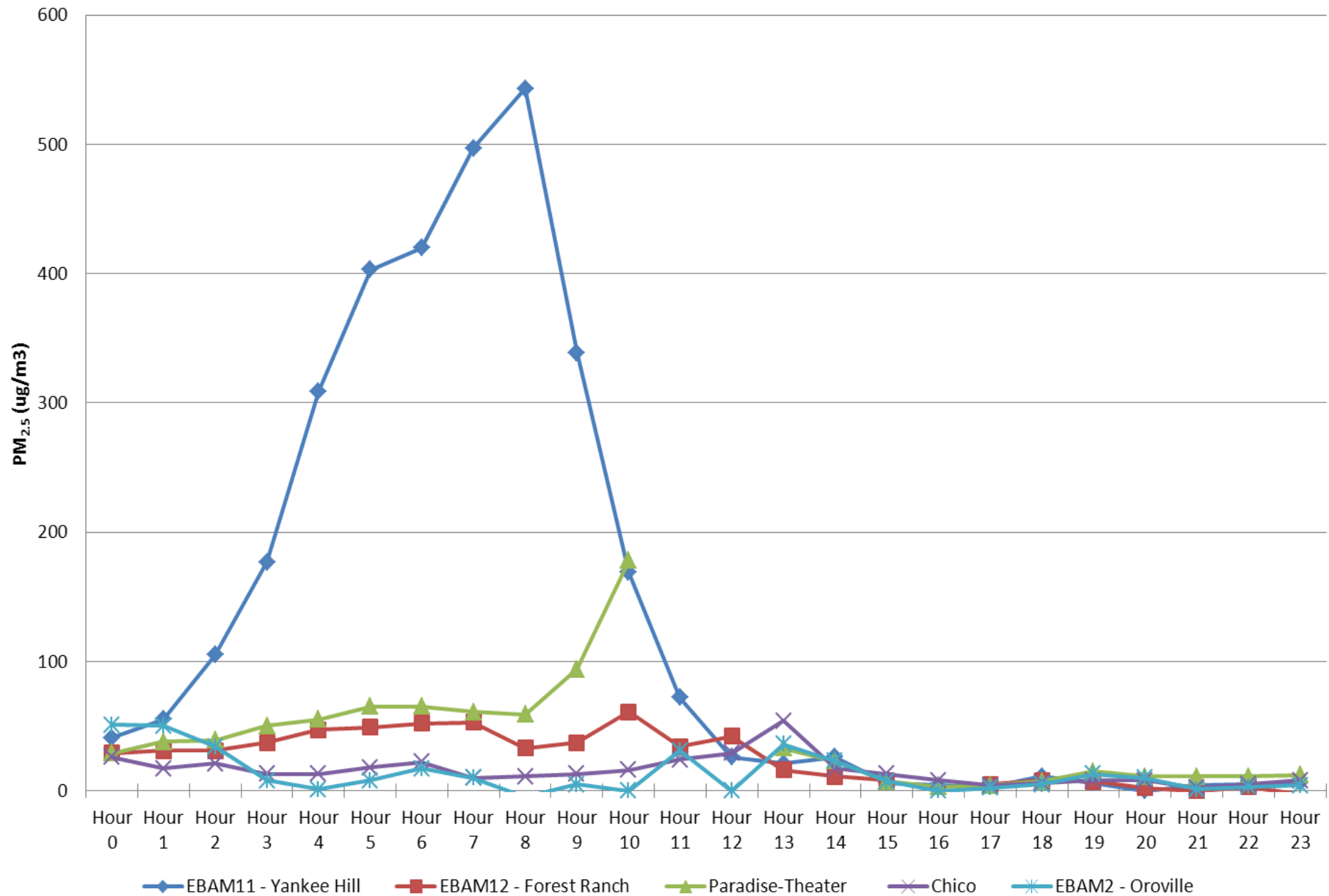
23-Aug-12 (All data in PST)

Data Preliminary and not Quality Assured



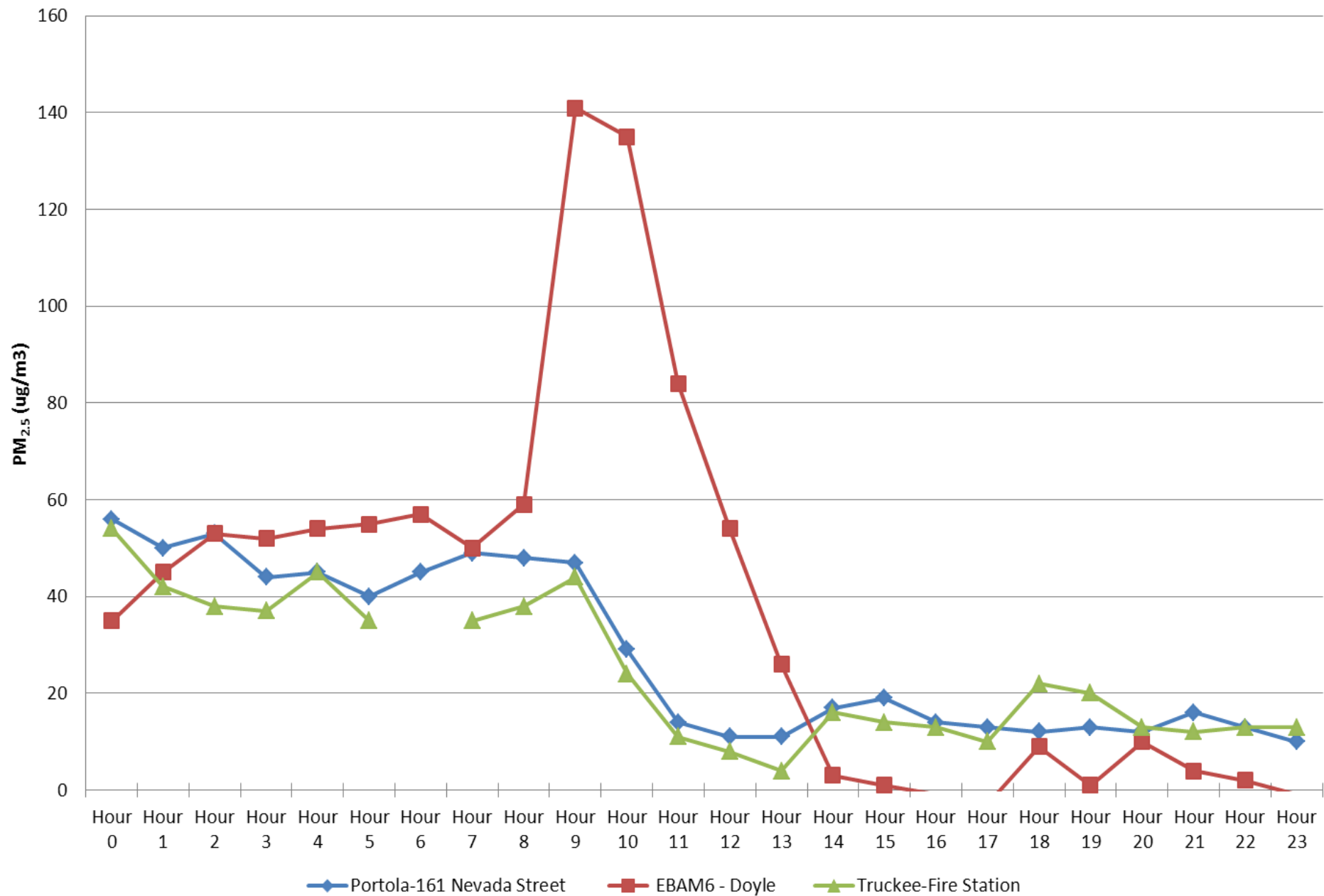
23-Aug-12 (All data in PST)

Data Preliminary and not Quality Assured



23-Aug-12 (All data in PST)

Data Preliminary and not Quality Assured



23-Aug-12 (All data in PST)

Data Preliminary and not Quality Assured

